

SPEC SHEET + MEASUREMENTS



OGIO® Connection Jogger. OG707

Product photo



Ready for pretty much everything, this performance jogger stretches, moves and keeps you connected with modern OGIO style.

- 92/8 poly/spandex with durable water-repellent (DWR) finish
- OGIO heat transfer label for tag-free comfort
- Elastic waist
- Interior drawcords at waist for an adjustable fit
- Front slash pockets
- Metal zippered back pocket
- Seaming detail at rise and back of knee for movement and comfort
- Rib knit cuffs

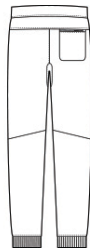
CARE INSTRUCTIONS

Machine Wash Cold. Do Not Use Fabric Softener. Non-Chlorine Bleach When Needed. Tumble Dry Low. Cool Iron If Necessary. Do Not Dry Clean.

Sketches



front



back

SPEC SHEET + MEASUREMENTS



OGIO® Connection Jogger. OG707

PRODUCT MEASUREMENTS

	XS	S	M	L	XL	2XL	3XL	4XL
Waist	13	14 1/2	16	17 1/2	19	20 1/2	22	23 1/2
Inseam	27	27	27 1/2	28	28 1/2	29	29 1/2	29 1/2

Waist: Measured point to point across the waistband when laid flat.

Inseam: Measured from crotch seam to hem.

SIZE CHARTS

	XS	S	M	L	XL	2XL	3XL	4XL
Waist	26-28	29-31	32-34	35-37	38-40	41-43	44-47	48-51

HOW TO MEASURE



WAIST

Measure around the smallest part of the natural waist.

SPEC SHEET + MEASUREMENTS



OGIO® Connection Jogger. OG707

COLORS



Blacktop
PMS Black C